

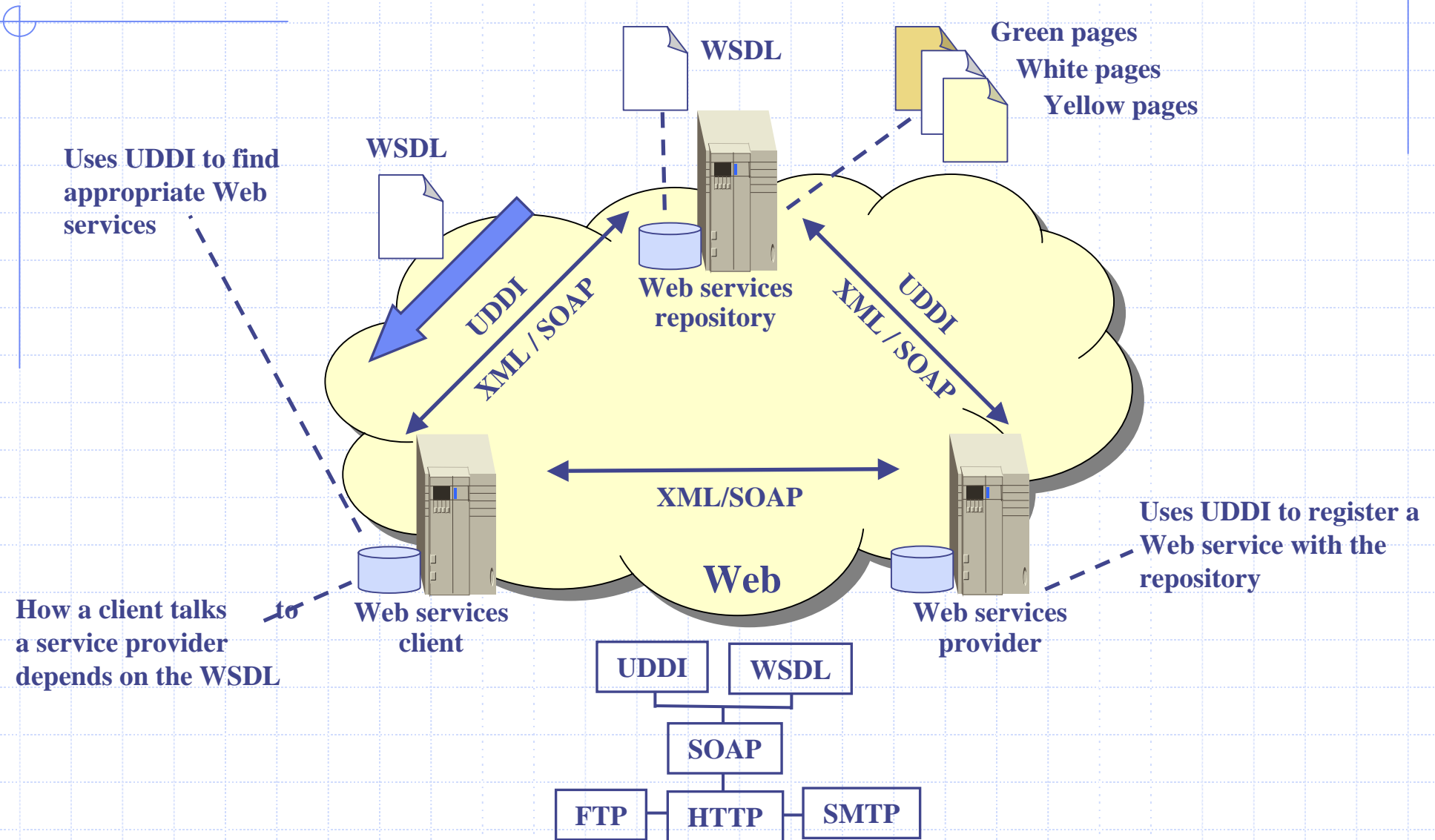


# JXTA & Web Services Integration

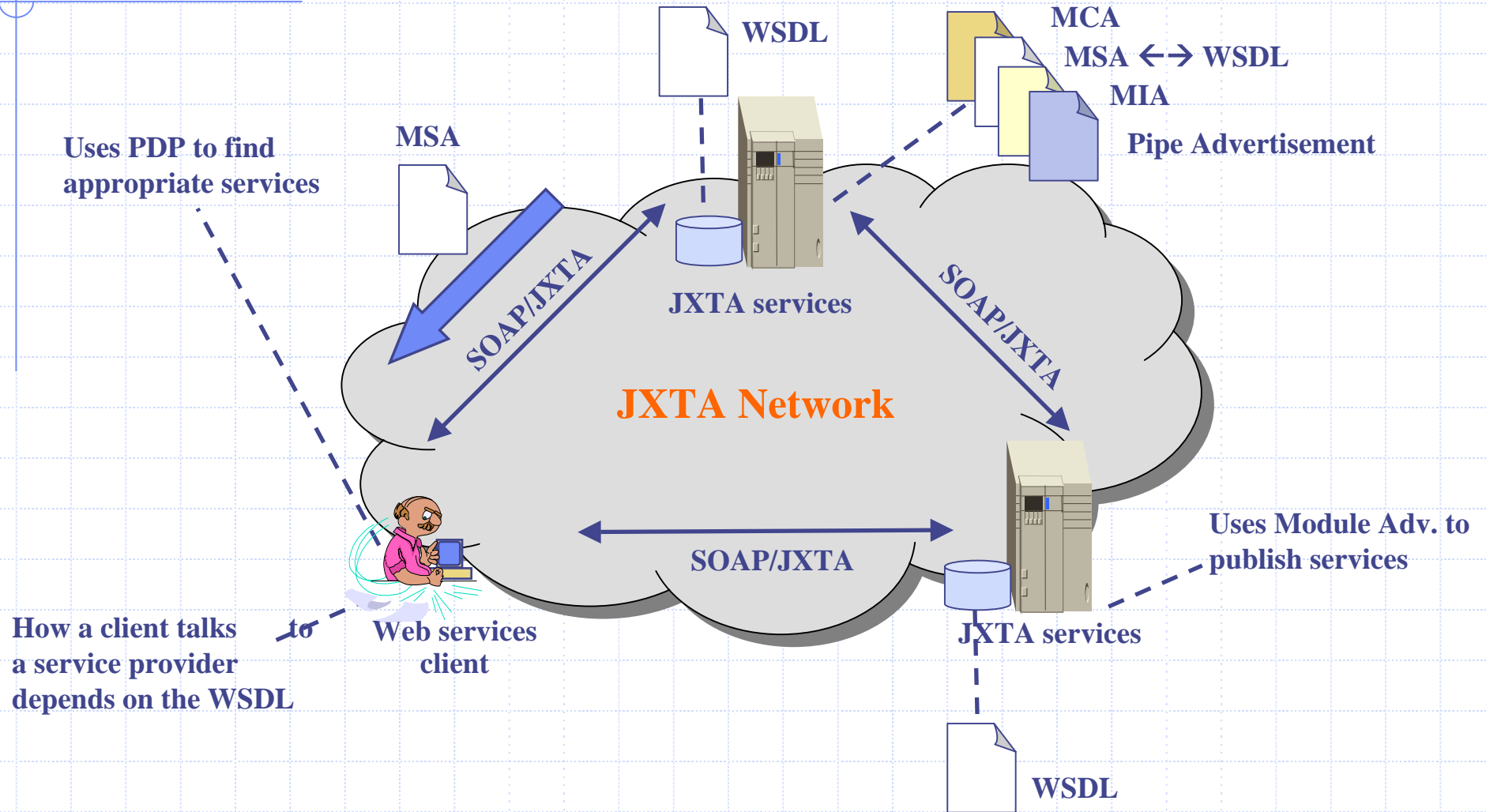
[sting@itri.org.tw](mailto:sting@itri.org.tw)

ChoJunLee@itri.org.tw

# Web Services Architecture

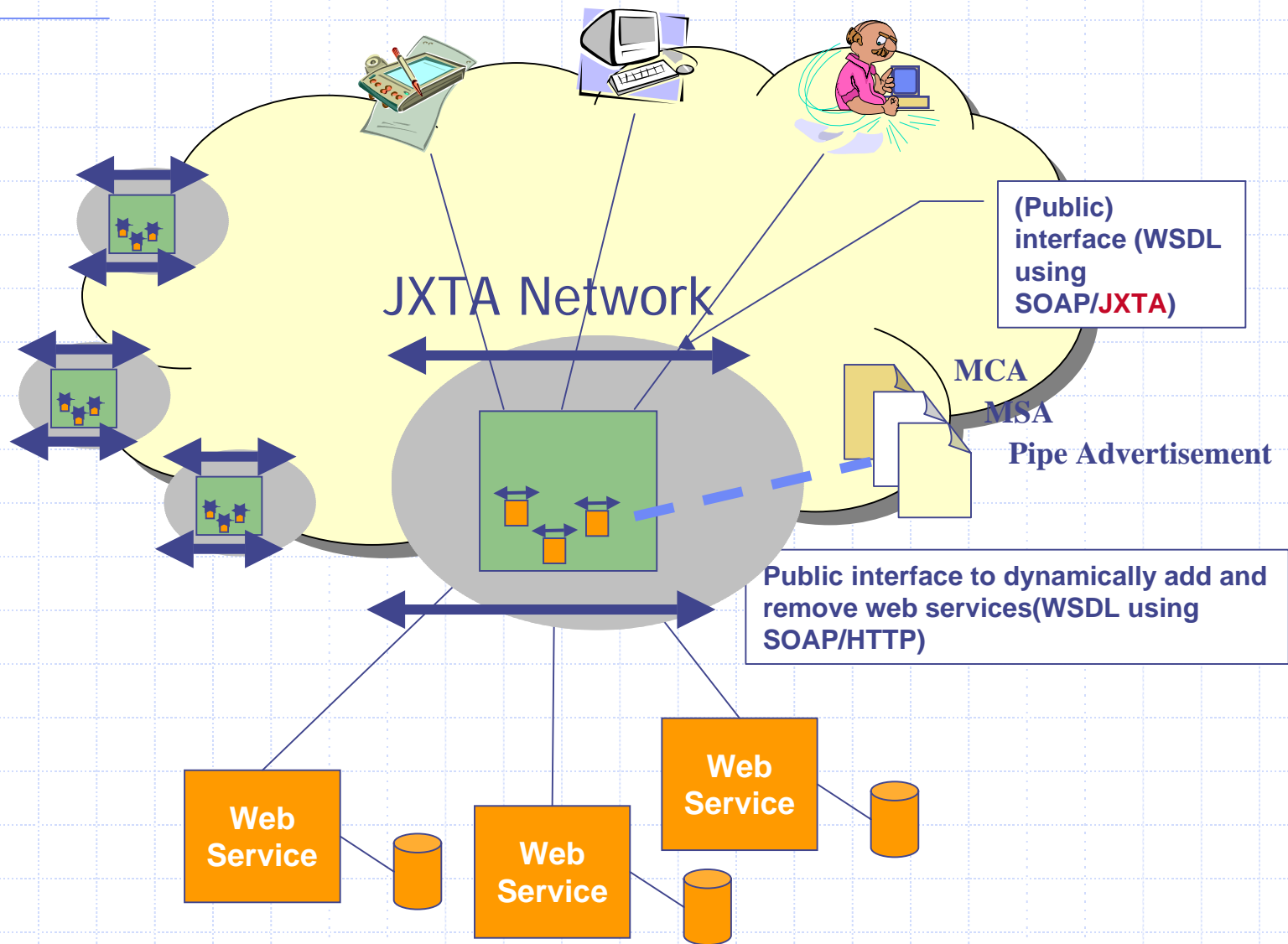


# JXTA Services Architecture



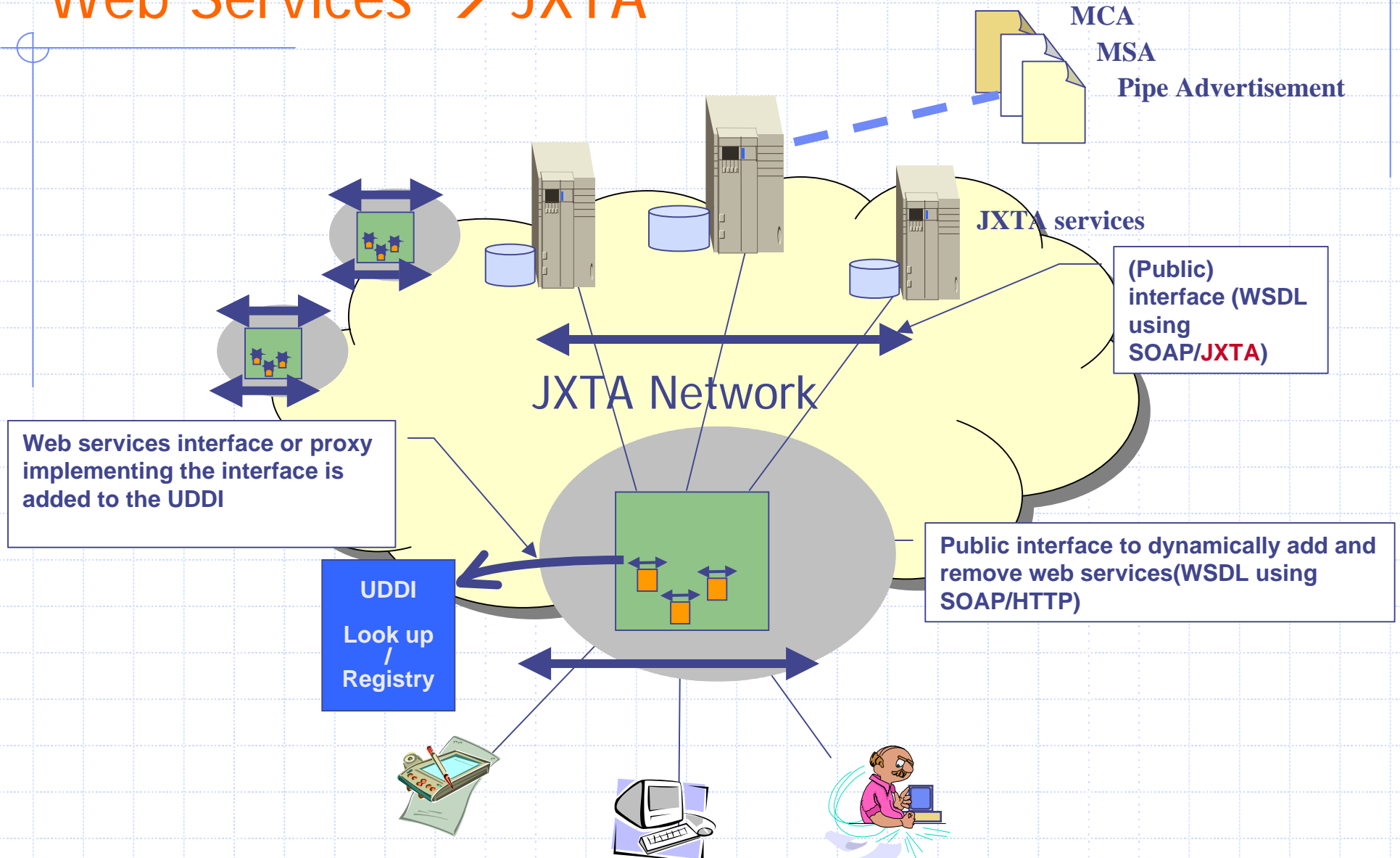
# JXTA & Web Services Integration

JXTA → Web Services

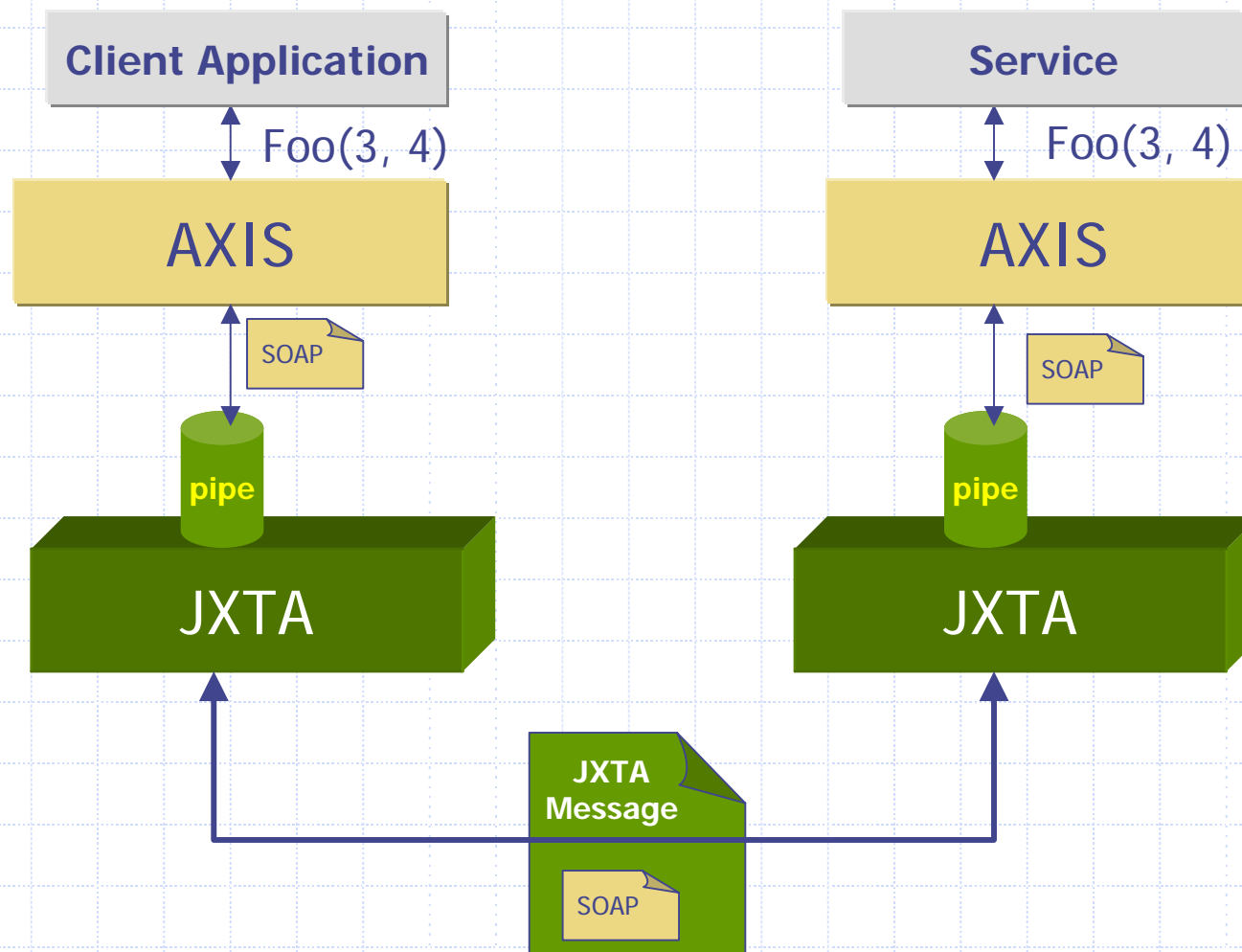


# JXTA & Web Services Integration

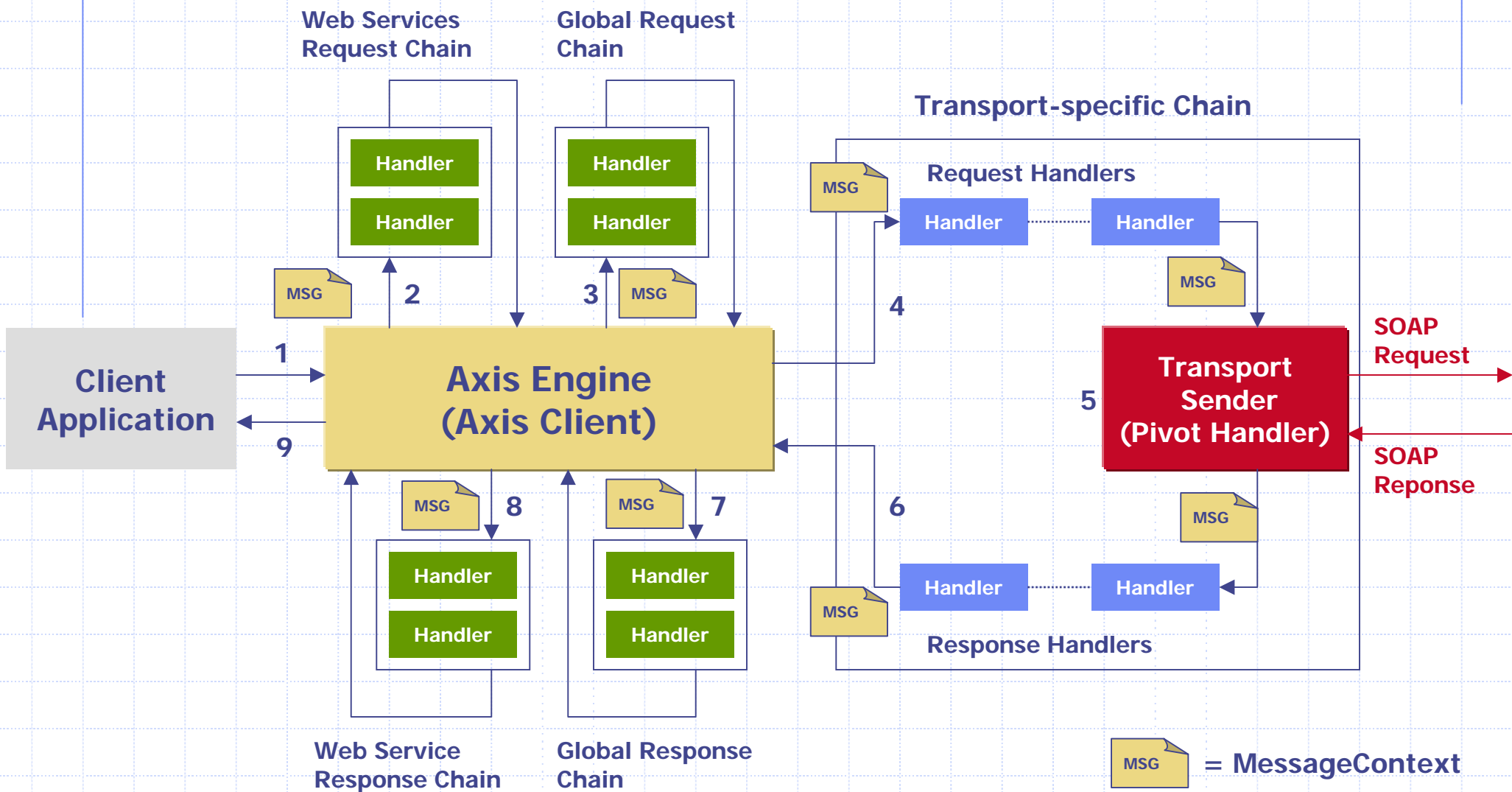
Web Services → JXTA



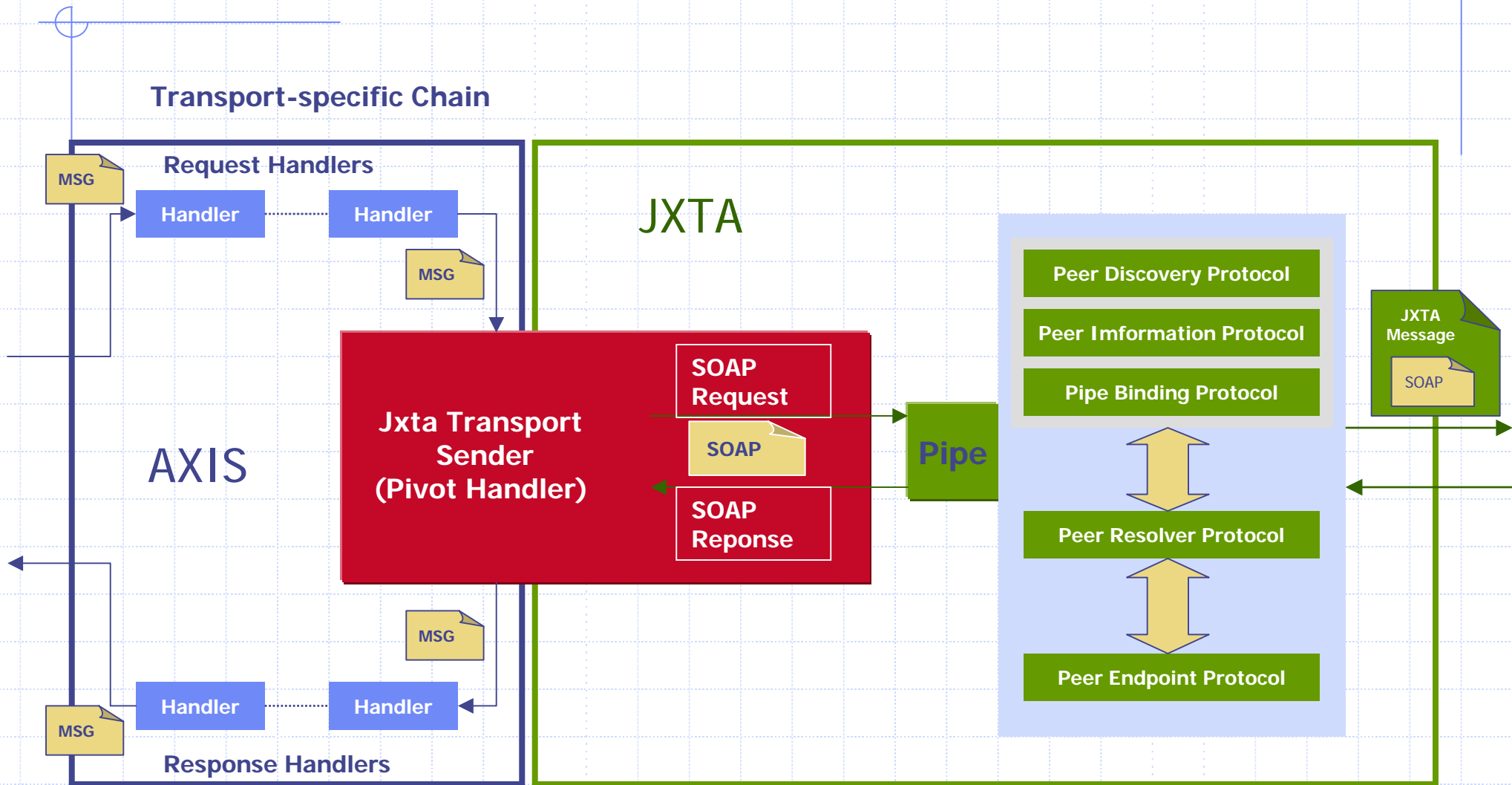
# Service Invocation through WSDL/SOAP in JXTA



# AXIS Client Side Message Processing System



# Plugin JXTA Transport Sender into AXIS





# Module Specification Adv.

<jxta:MSA>

<MSID>...</MSID>

<Name>...</Name>

<Ctrr>...</Ctrr>

<SURI>**http://url to its WSDL**</SURI>

<Vers>...</Vers>

<Desc>...</Desc>

<Parm>...</Parm>

<jxta:PipeAdvertisement>...</jxta:PipeAdvertisement>

<Proxy>...</Proxy>

<Auth>...</Auth>

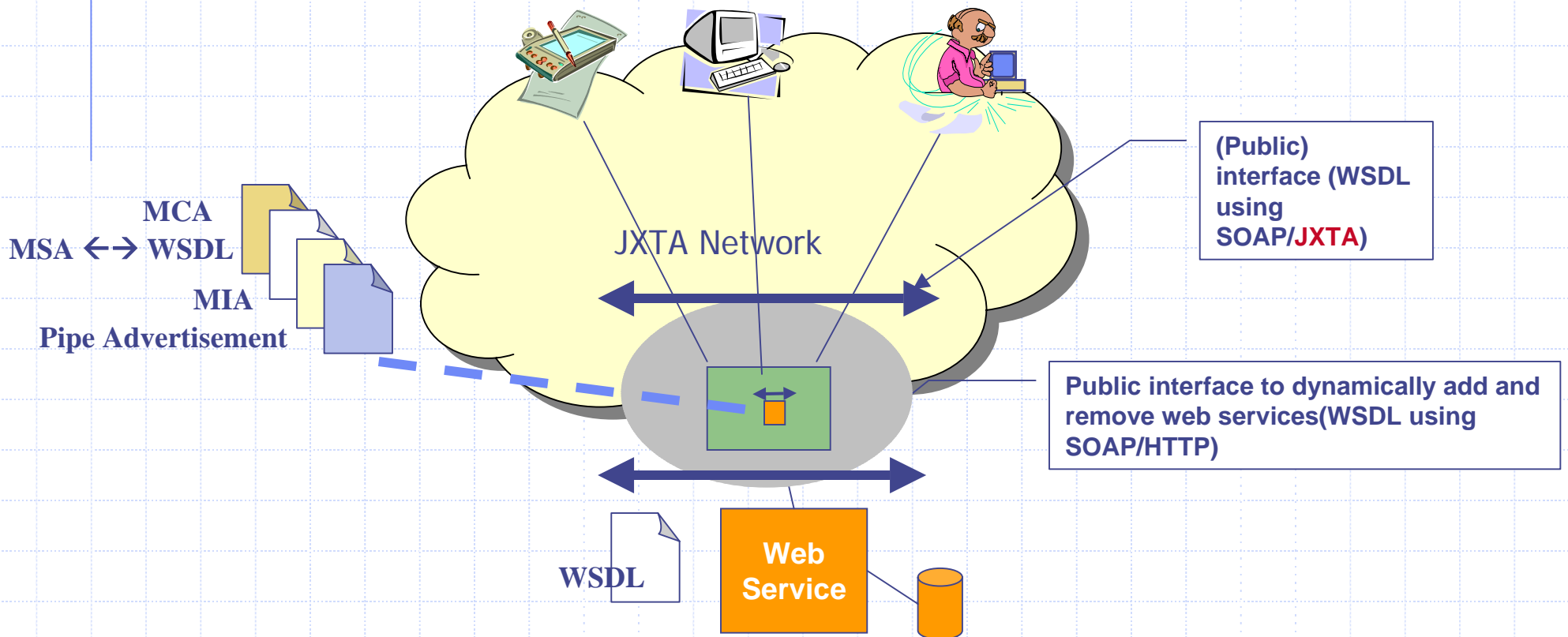
</jxta:MSA>

# JSDL : JXTA Service Definition Language Changes to WSDL

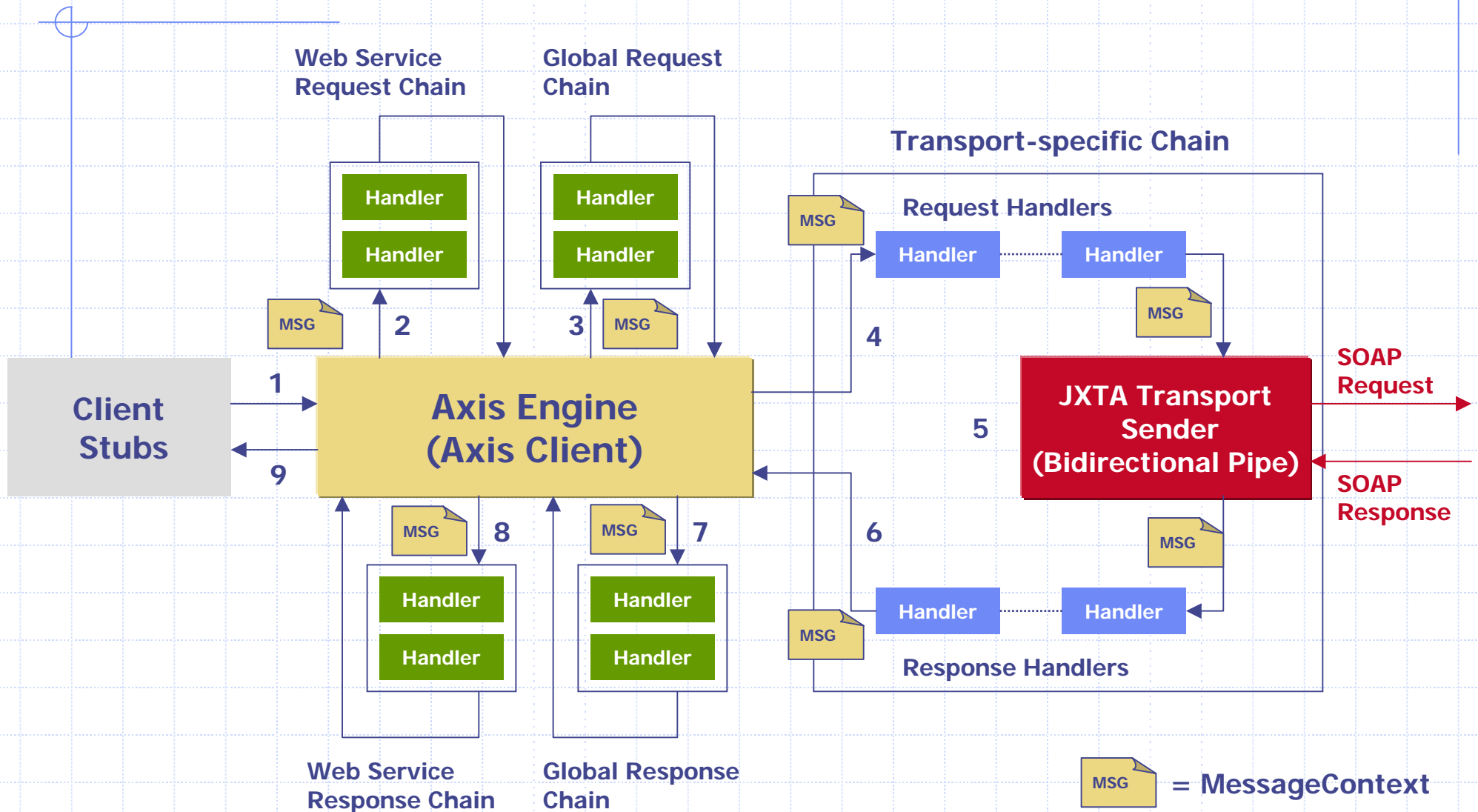
```
<binding name="XXXXXXXX" type=XXXX">  
  <soap:binding style="document"  
    transport="http://schemas.xmlsoap.org/soap/JXTA" />  
  <operation name="GetLastTradePrice">  
    <soap:operation  
      soapAction="http://example.com/GetLastTradePrice" />  
    .....  
  </operation>  
</binding>  
<service name="StockQuoteService">  
  .....  
  <port name="StockQuotePort"  
    binding="tns:StockQuoteBinding">  
    <soap:address  
      location="http://example.com/stockquote.MSA" />  
  </port>  
</service>
```

# GOAL-1. JXTA2WebService

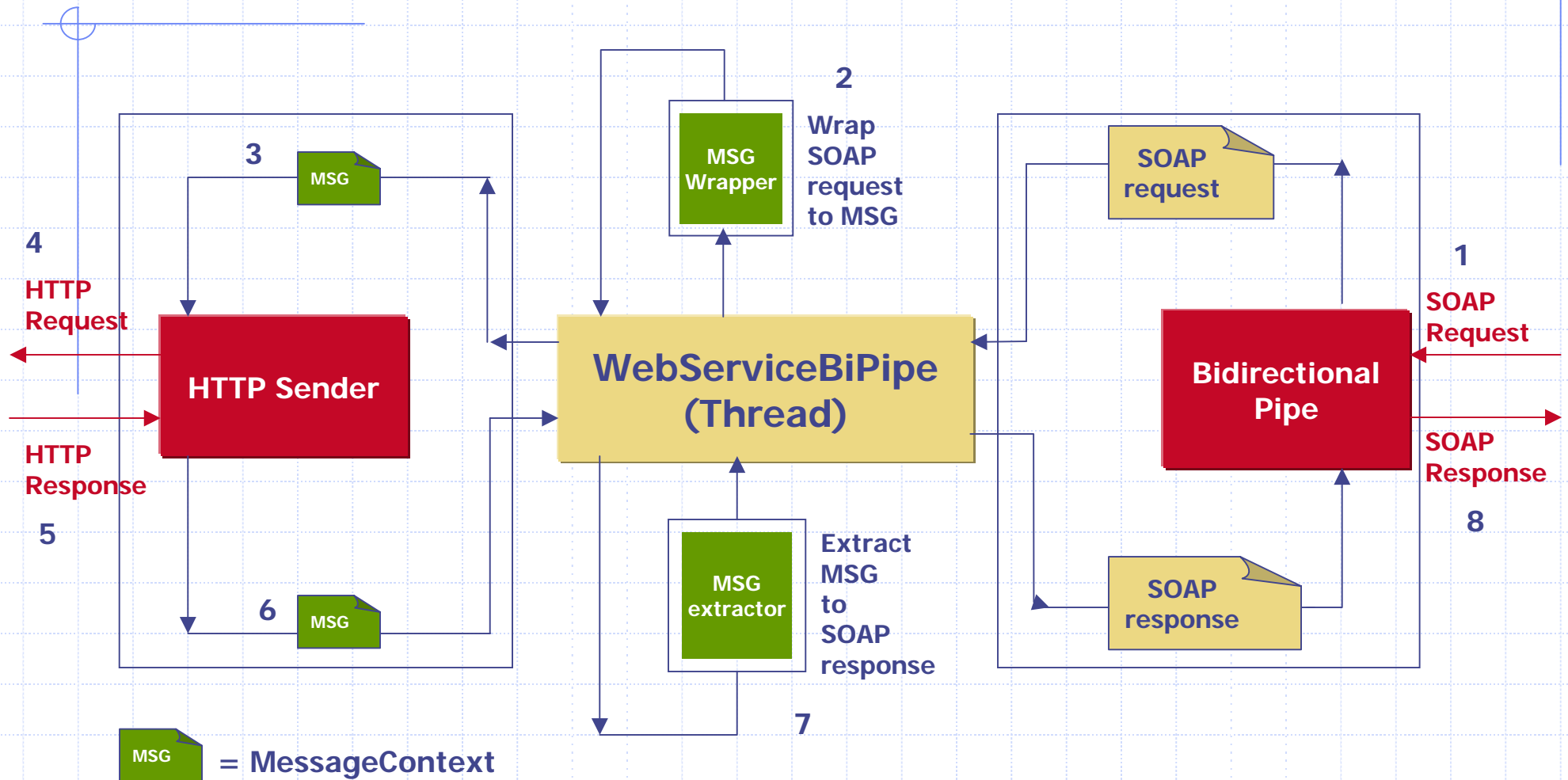
- ◆ Give me a web service and its WSDL, A mirror JXTA service will be automatically deployed



# JXTA2WebService – Client Side

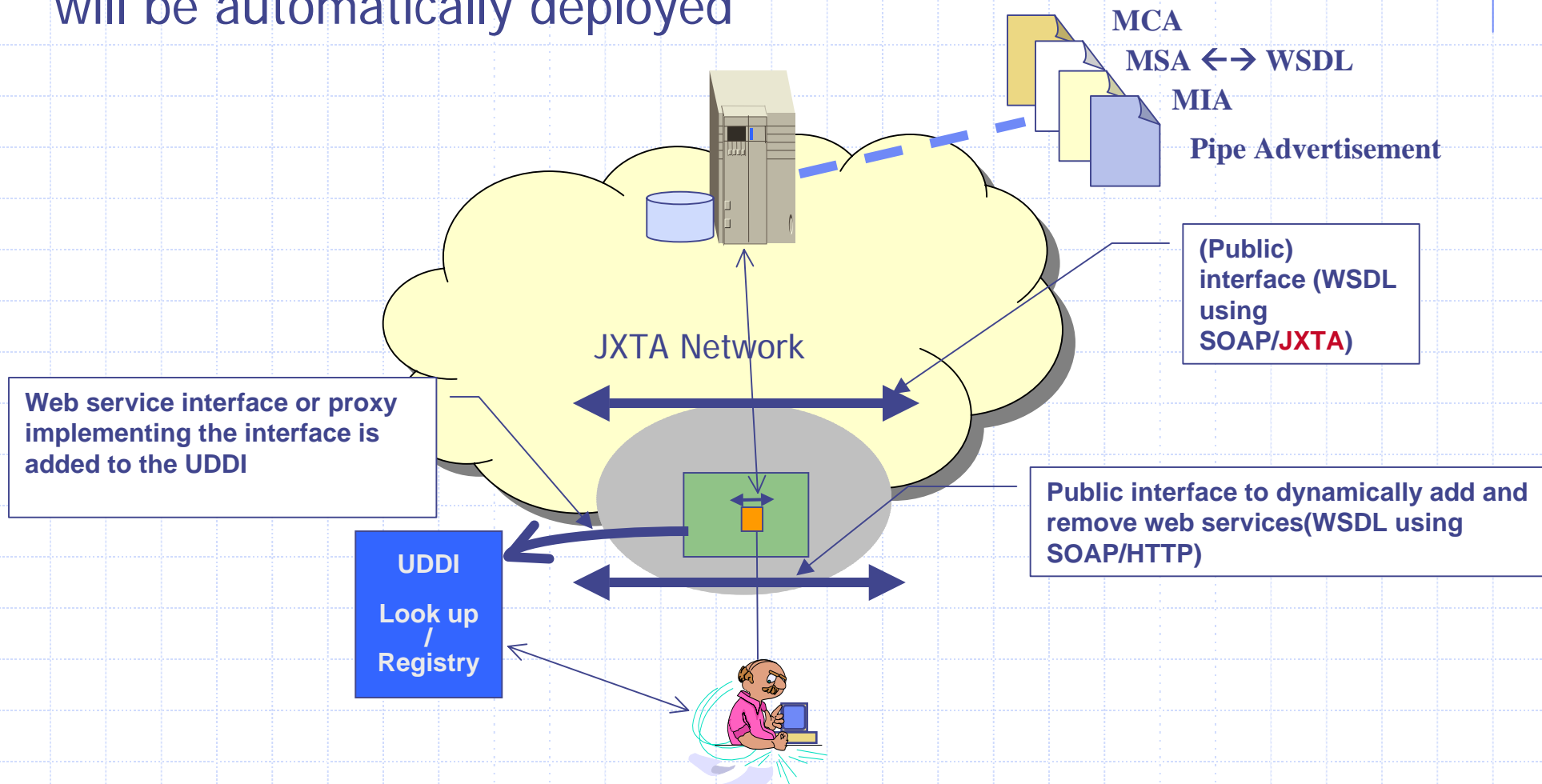


# JXTA2WebService – Gateway Side

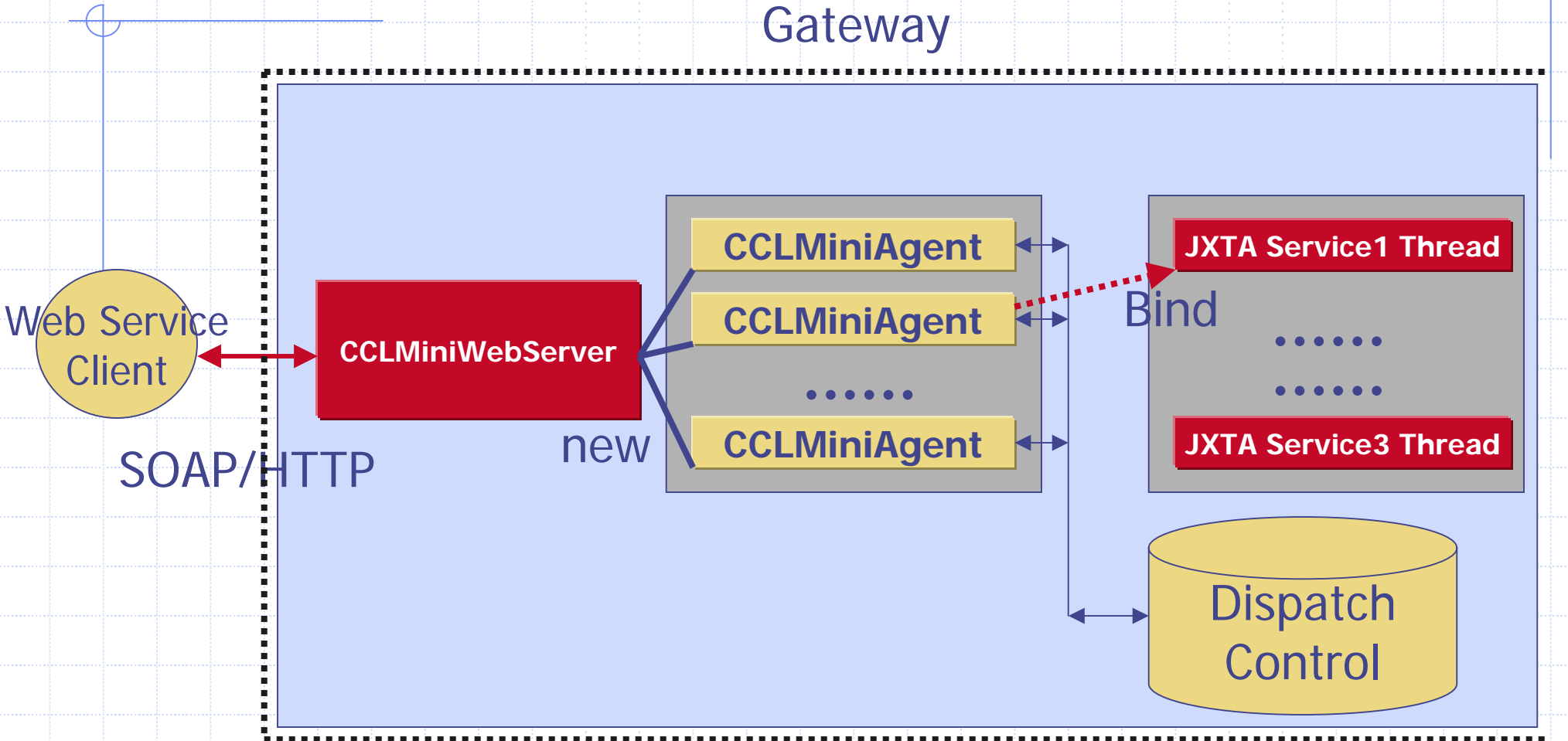


# Goal-2. WebService2JXTA

- ◆ Give me a jxta service and its adv's, A mirror web service will be automatically deployed



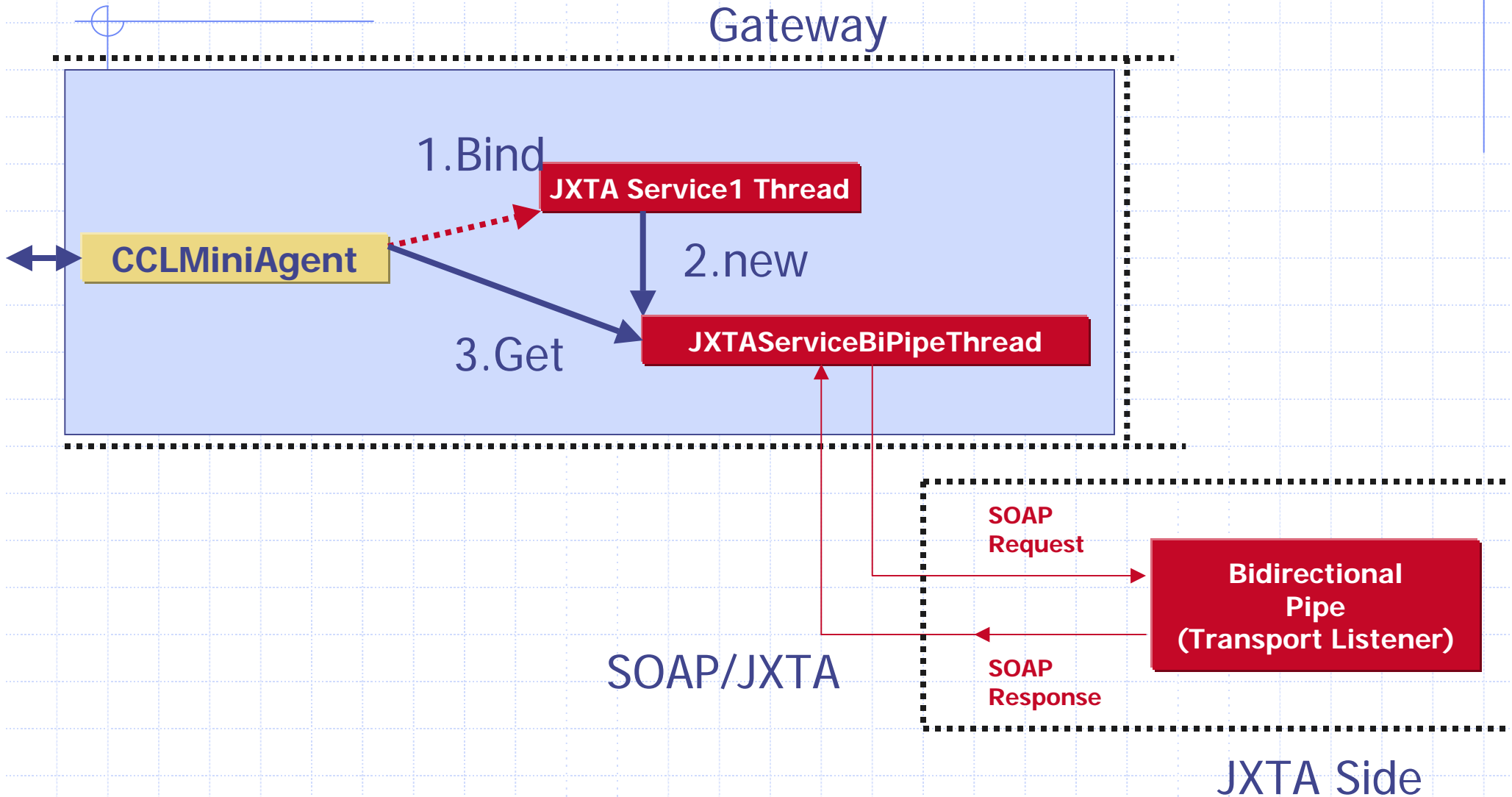
# WebService2JXTA – Gateway Side



Mapping:  
Target Service <-> JXTA Service

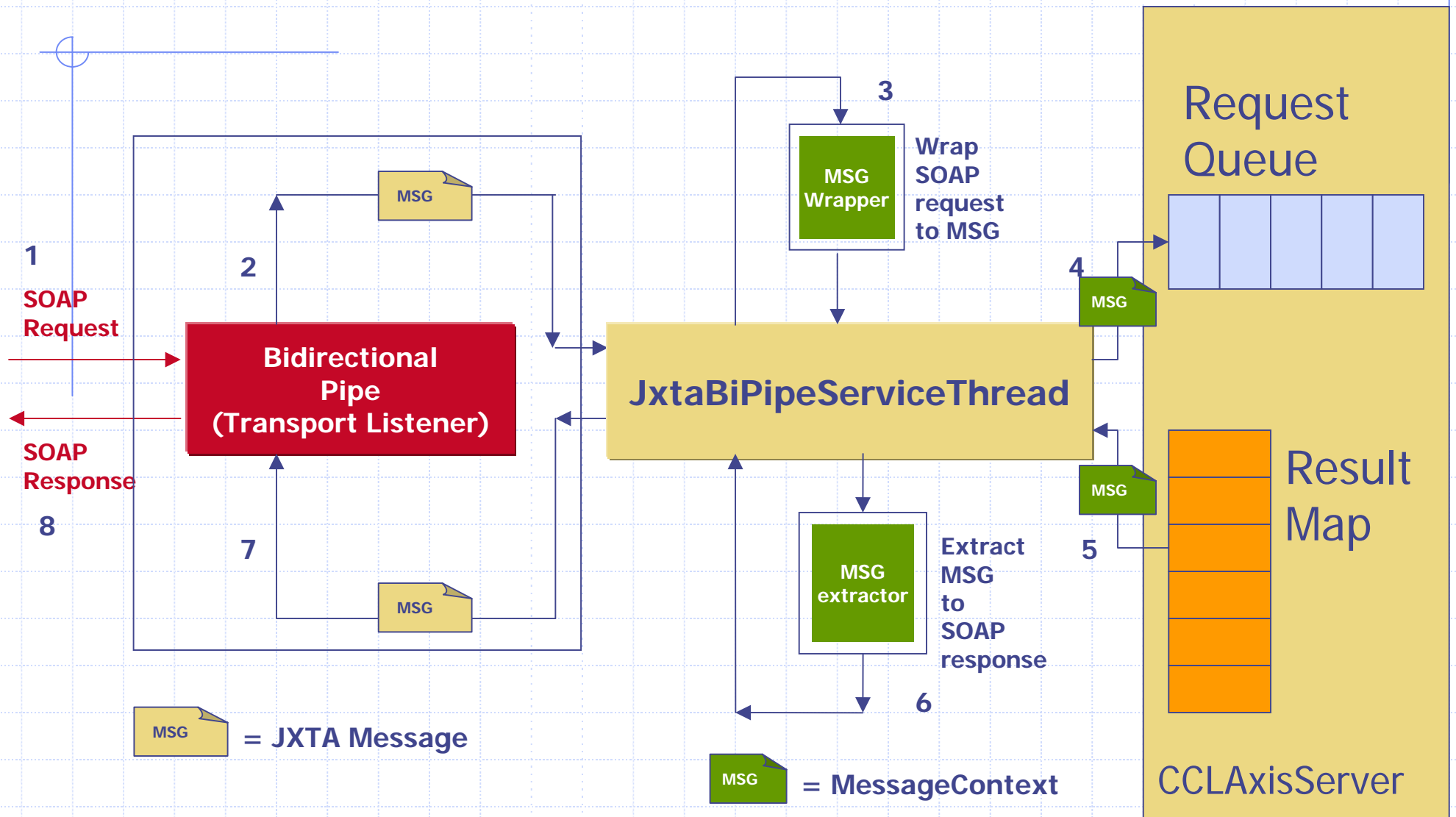
# WebService2JXTA – Gateway Side (cont.)

Gateway

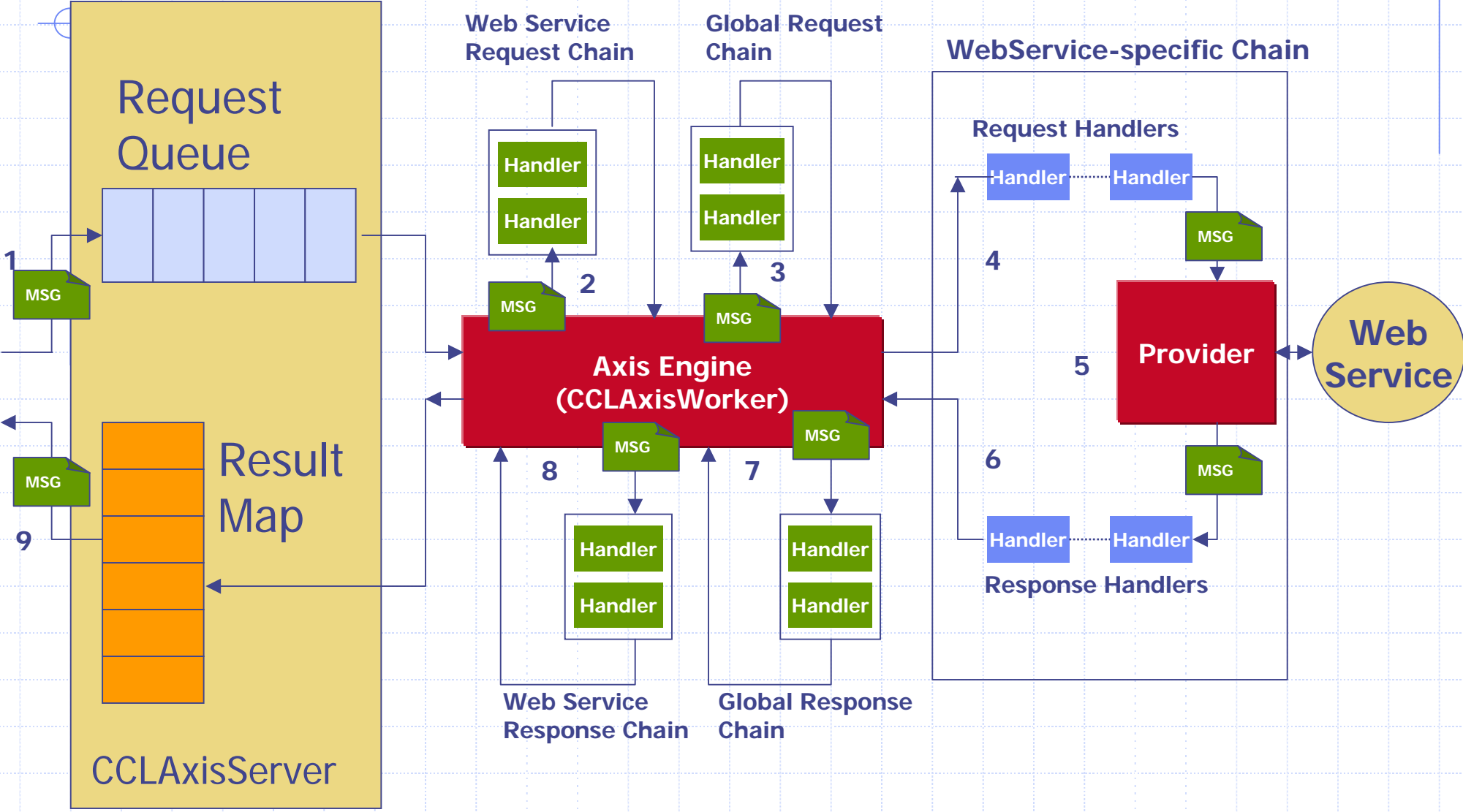




# WebService2JXTA – JXTA Side



# WebService2JXTA – JXTA Side-cont.

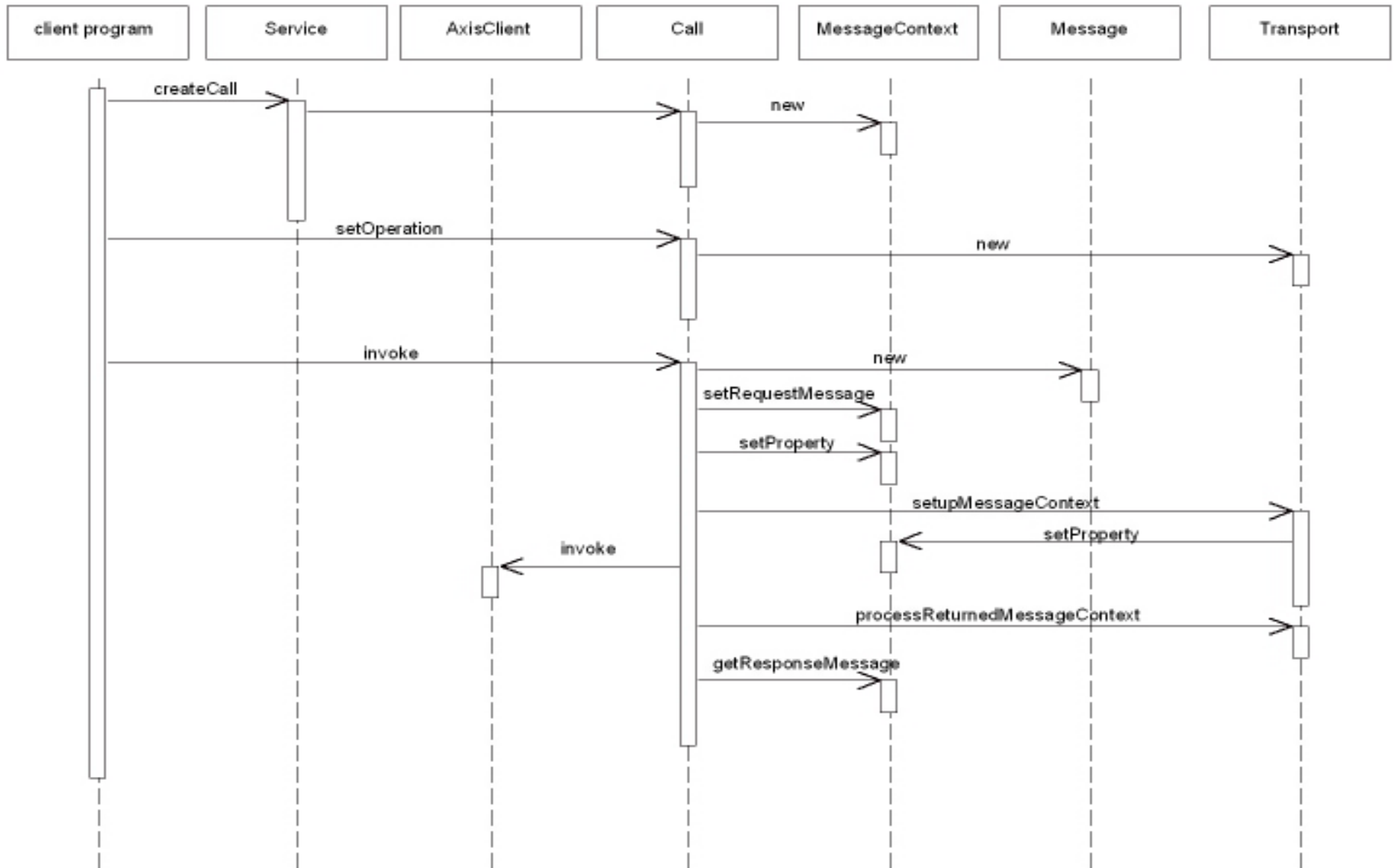




# Reference : Apache Axis 1.0

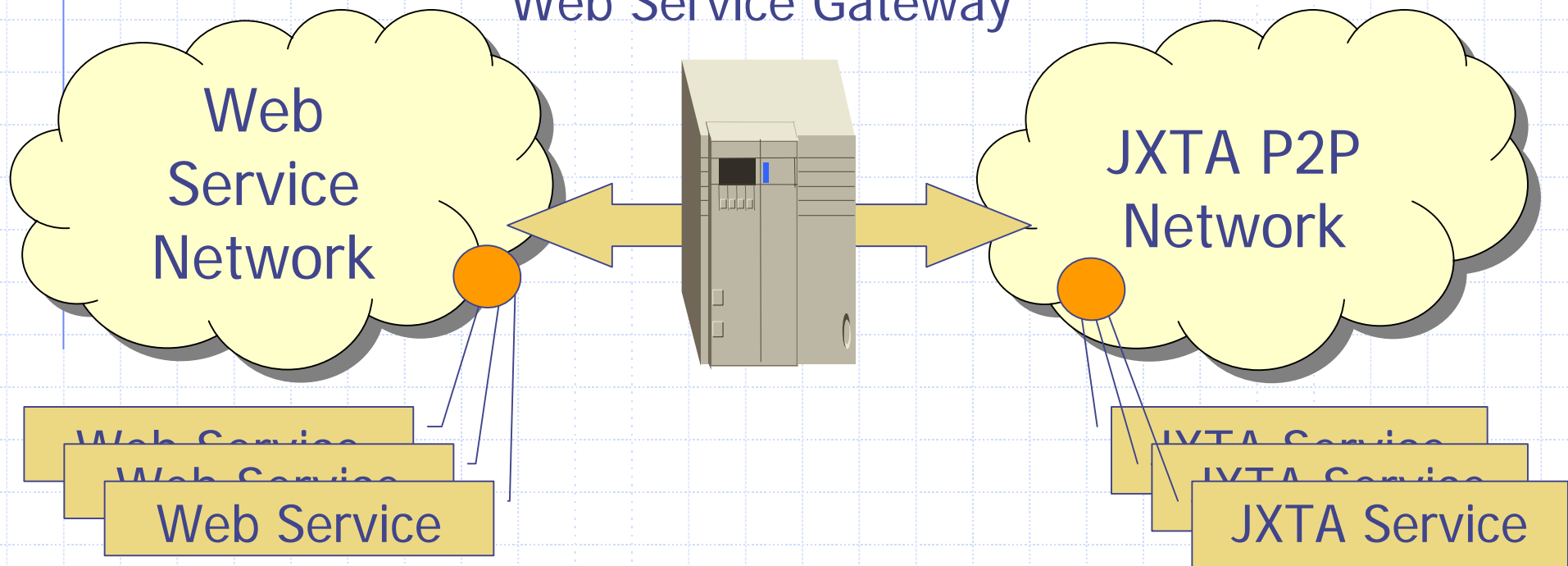
Handler

# Interaction Diagram



# Web Service Gateway

## Web Service Gateway



- **WebService2JXTA**
  - ◆ Client use Web Service Invocation to use JXTA Service.
  - ◆ => **Web Service Client** → gateway → **JXTA Service**
- **JXTA2WebService**
  - ◆ Client use JXTA Service Invocation to use Web Service.
  - ◆ => **Web Service** ← gateway ← **JXTA Client**

# Web Service Gateway – cont.

◆ Target : Transparency between JXTA world and Web Service World.

- **Proxy** for Web Service & JXTA Service

## ■ WebService2JXTA

■ Client use Web Service Invocation to use JXTA Service.

=> **Web Service Client** → gateway → **JXTA Service**

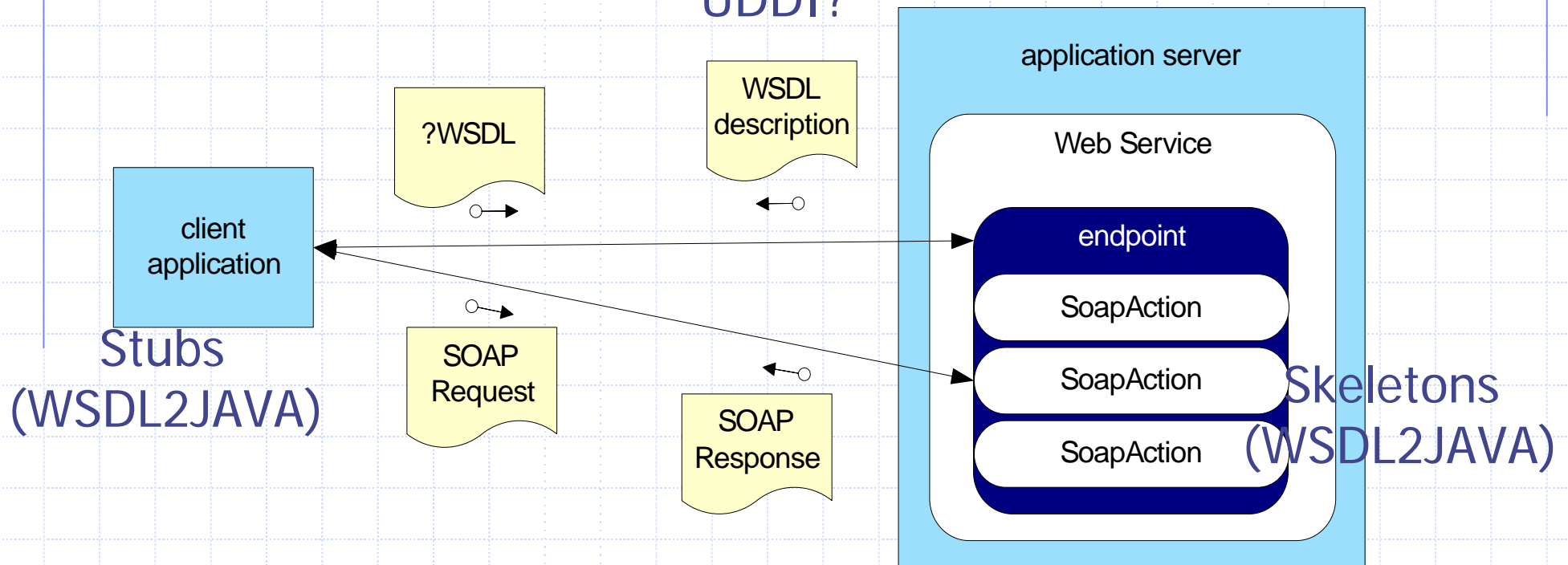
## ■ JXTA2WebService

■ Client use JXTA Service Invocation to use Web Service.

=> **Web Service** ← gateway ← **JXTA Client**

# Web Services : WSDL

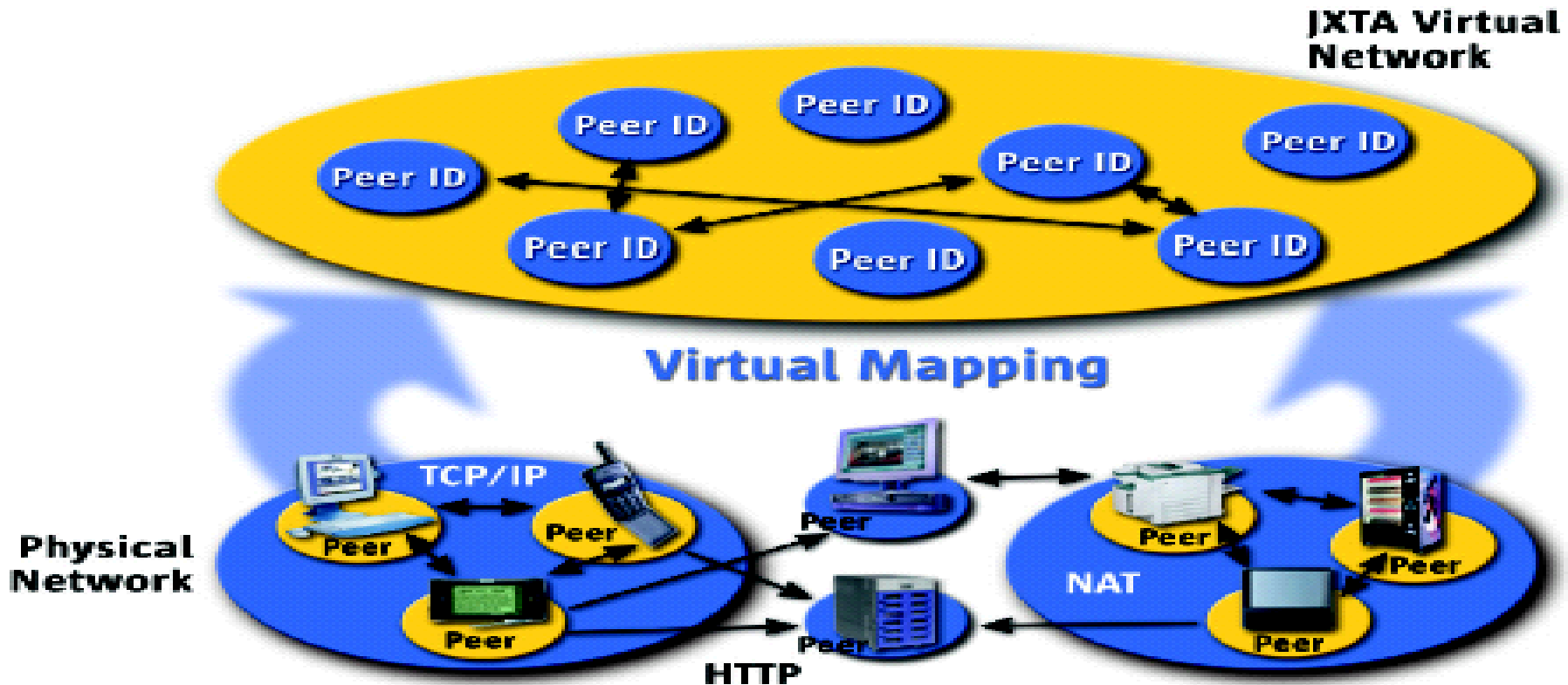
UDDI?



- *there is no point writing a Web Service unless you want interoperability.*

# JXTA Service : JSDL

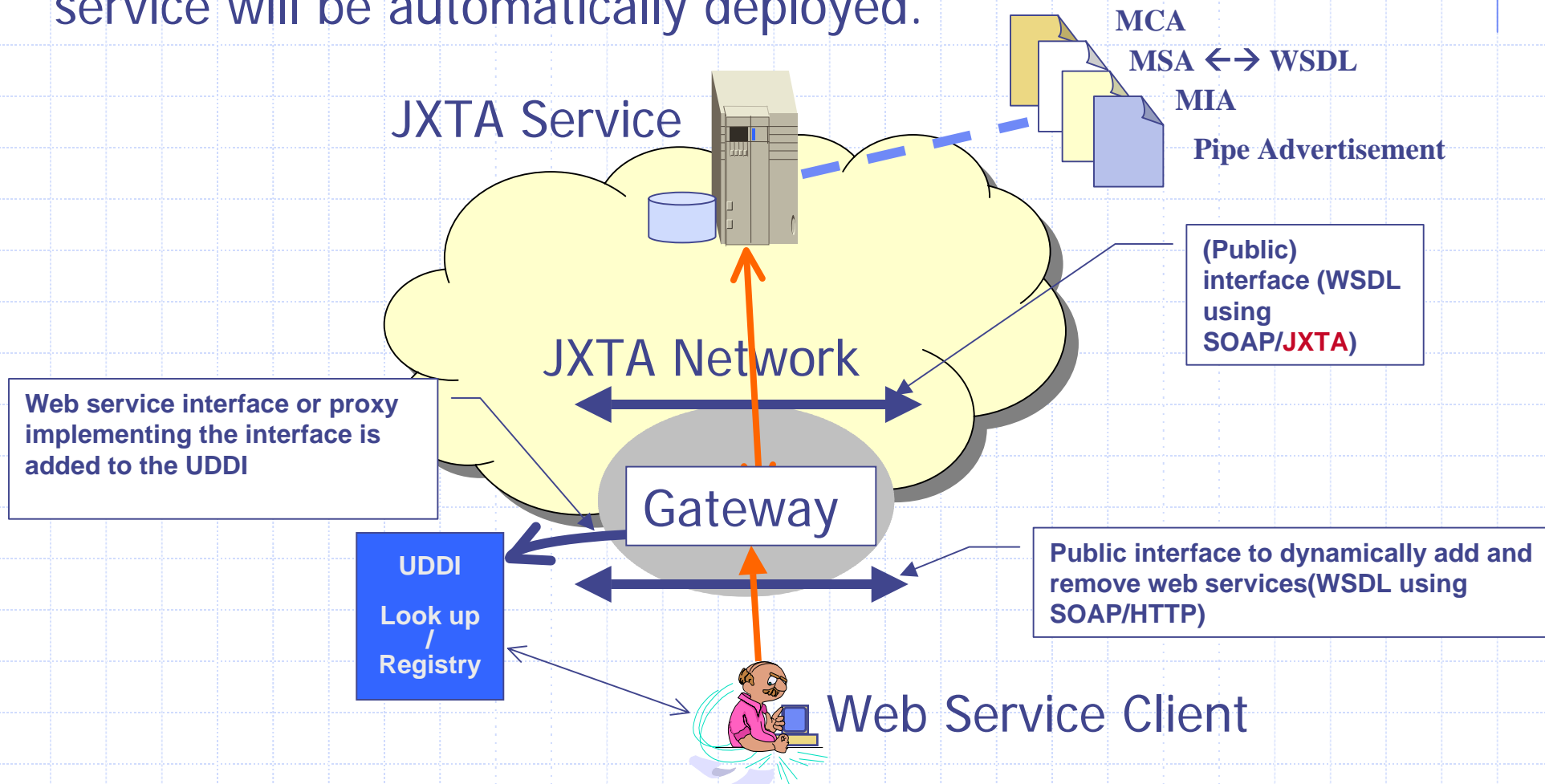
- ◆ JXTA : a P2P platform to establish a virtual network over physical network.





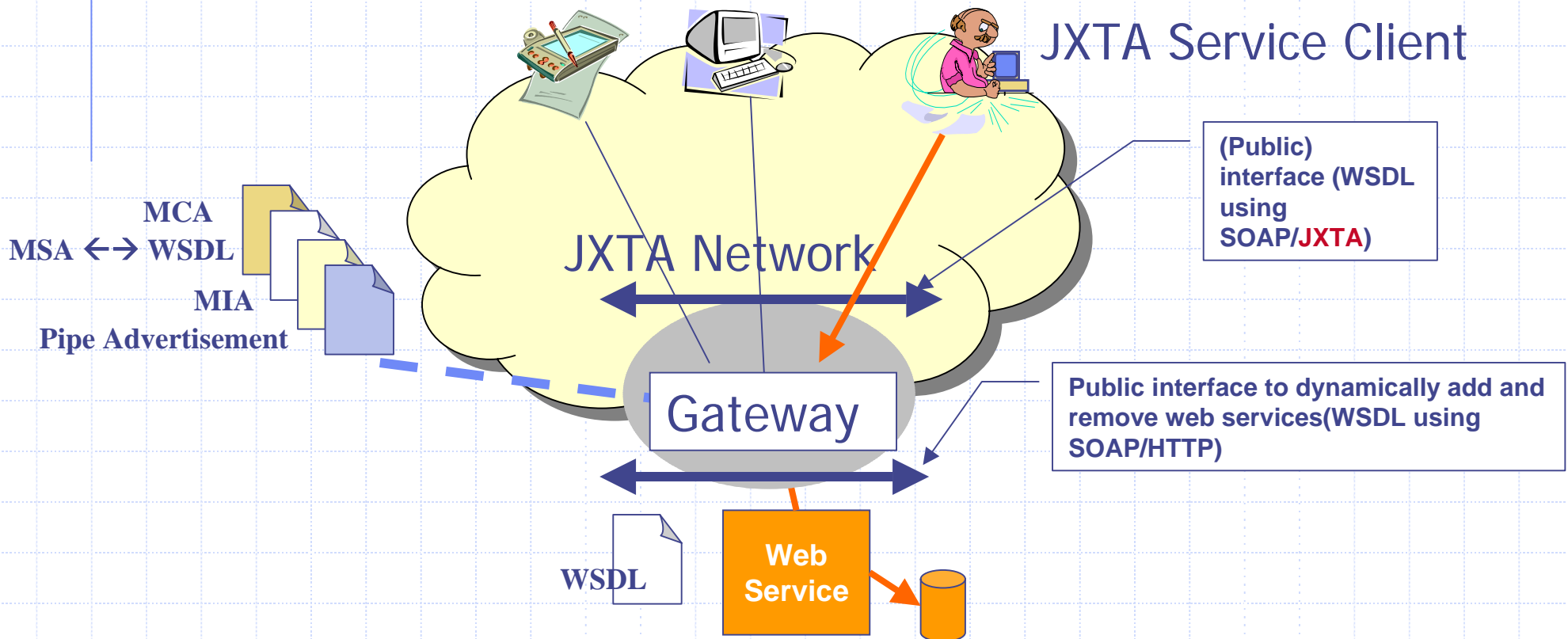
# Goal-1. WebService2JXTA

- ◆ Give me a JXTA service and its adv's, A mirror web service will be automatically deployed.



# GOAL-2. JXTA2WebService

- ◆ Give me a web service and its WSDL, A mirror JXTA service will be automatically deployed



# Web Service & JXTA Service tech:

## ◆ Web Services :

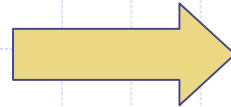
- AXIS : follow-on to the Apache SOAP project.
- WSDL2JAVA Tool : stubs & skeletons

## ◆ JXTA Service:

- A P2P framework developed by Sun.
- CCLWSDL2JAVA Tool : stubs with JXTA Transport Handler. (SOAP/JXTA)

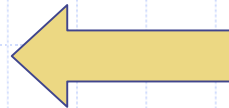
# Tech on Gateway :

## ◆ WebService2JXTA:



- MiniWebServer - select correct JXTA Service proxy implementation for incoming Web Service request.
- A simple multi-thread design in JXTA Service proxy implementation.

## ◆ JXTA2WebService:



- Deployment Tool for Web Service proxy – publish JXTA advertisement and lunch proxy implementation.
- HttpSoapHandler – Send SOAP request and receive SOAP response for Web Service Invocation.

# Tech on service & client side:

## ◆ JXTA client :

- CCLWSDL2JAVA Tool – generate Web Service stubs with JXTA Transport Handler. (SOAP/JXTA)

## ◆ JXTA Service side :

- CCLAxisServer – handle Web Service Invocation for JXTA Service.  
(Type convention between XML <-> Java )
- Deployment Tool for JXTA Service proxy

# Demo scenario :

## ◆ WebService2JXTA

- Adv : Service deployment leverages JXTA network advantage.
  - ◆ Secure : Peer Group Scope
  - ◆ JXTA Service can be deployed on different peers in JXTA virtual network.
  - ◆ User quantity

